

RCF

F

 LEXUS
EXPERIENCE AMAZING





In this brochure we invite you to prepare for the excitement of choosing your new Lexus RC F sports coupé. Showcasing the latest in race-bred design, the RC F features a bold signature grille with distinctive LED headlights. Behind the wheel, you'll experience amazing V8 performance, both on and off the racetrack.

The RC F's driver-focused cockpit is more sophisticated than ever before, with a large 10.3-inch multimedia display that is easy to read and intuitive to control using a Touch Pad. Finely crafted leather sports seats give the cabin an air of modern elegance and refinement.

The new RC F is equipped with the breakthrough Lexus Safety System +. This includes a Pre-Collision System with pedestrian detection; Lane Departure Alert with Sway Warning function to help you stay on course; Automatic High Beam for enhanced vision at night; Road Sign Assist that recognises traffic signs and Dynamic Radar Cruise Control.

For the ultimate in exhilarating performance, drivers can order the RC F Track Edition that is 55 kg lighter than the standard RC F. Equipped for life on the racetrack, it's fitted with a titanium exhaust system, carbon-ceramic disc brakes and a motorsport-inspired aero package.

RC F



01. MODEL

Discover more about the powerful new Lexus RC F.

Pages 04-07



02. GRADES

What kind of RC F best fits your driving style? Select from Luxury, Carbon and Track Edition grades.

Pages 08-09



03. FEATURES

Discover the amazing level of standard and exciting optional features available for your RC F sports coupé.

Pages 10-11



04. TECHNOLOGY

Learn more about RC F technologies such as Lexus Safety System + and Lexus Premium Navigation.

Page 12-15



05. ACCESSORIES

Explore the great range of accessories created by Lexus to enhance your enjoyment of the RC F.

Page 16-17



06. COLOURS

Select your favourite exterior colour and specify a 'Takumi'-crafted interior that will make you feel at home every time you drive your RC F.

Pages 18-21



07. EQUIPMENT

The RC F comes with a wide range of equipment as standard. Learn more about the extras you can add.

Pages 22-25



08. TECHNICAL DATA

Study all the key RC F technical data before ordering your sports coupé.

Pages 26-27



THE RC F

Whether you're driving on the racetrack or open road, the new RC F sports coupé delivers awesome V8 performance right up to 270 km/h. Now sharper and more exhilarating than ever before, the RC F's new look was inspired by the Lexus RC F GT3 race cars. Developed at our technical centre near Fuji Speedway, the car features an extraordinarily rigid chassis and race-tuned suspension. For the sharpest standing start acceleration, the new RC F is also equipped with electronic launch control as standard, a system which automatically adjusts the traction and throttle for maximum take-off from standstill.



Graphic Black bodywork, 19" forged alloy wheels, V8 engine under the bonnet



01. V8 ENGINE

Hand-built and stethoscope-tuned, this naturally aspirated 5.0-litre V8 petrol engine develops 464 DIN hp and 520 Nm of torque. Thrilling to drive, advanced sound engineering creates a deeply resonant tone up to 2800 rpm, and a higher-pitched roar as revolutions rise above 6000 rpm.



02. 8-SPEED TRANSMISSION

The V8 engine delivers power via an 8-speed Sport Direct Shift sequential transmission with manual override. Select Manual mode and use shift paddles to enjoy rapid sports performance. When paddle downshifting (in just 0.2 seconds) you'll experience the awesome sound of the throttle 'blipping' between gears.



03. TORQUE VECTORING DIFFERENTIAL

Designed to further heighten driving enjoyment, the RC F Carbon grade features a Torque Vectoring Differential with three operating modes: STANDARD, for a balance of agile performance and high-speed stability, SLALOM, for an emphasis on nimble response to steering inputs, and TRACK, for consistent, stable cornering behaviour while circuit driving.



LUXURY

As you'd expect from Lexus, the Luxury package on the new RC F has an amazing level of equipment.

19" forged alloy wheels, 7-twin-spoke design, 255/35 (fr)
275/35 (rr) R19 tyres
Body-coloured front spoiler
Headlights, triple LED

Semi-aniline leather upholstery
7-speaker Mark Levinson® Premium Surround Sound system
10.3" multimedia display
Lexus Premium Navigation



CARBON

To reduce weight, the Carbon package uses lightweight yet enormously strong carbon fibre for the front spoiler, roof, lower rocker panel and active rear wing.

19" forged alloy wheels, 10-spoke polished, 255/35 (fr)
275/35 (rr) R19 tyres
Carbon-fibre front spoiler
Carbon-fibre bonnet and roof
Headlights, triple LED

Semi-aniline leather upholstery
17-speaker Mark Levinson® Premium Surround Sound system
10.3" multimedia display
Lexus Premium Navigation
Torque Vectoring Differential



TRACK EDITION

For the ultimate in exhilarating performance, the RC F Track Edition features carbon-ceramic disc brakes, titanium exhaust components and an exclusive aero package in carbon fibre.

19" lightweight forged alloy wheels, 10-spoke, 255/35 (fr)
275/35 (rr) R19 tyres
Carbon-fibre front spoiler and fixed rear wing
Carbon-fibre bonnet and roof
Headlights, triple LED

Flare Red Alcantara® upholstery
17-speaker Mark Levinson® Premium Surround Sound system
10.3" multimedia display
Lexus Premium Navigation
Lightweight components



01



02

01. 19" FORGED ALLOYS

This muscular 7-twin-spoke wheel is both lightweight and rigid, fitted with 255/35 R19 (front) and 275/35 R19 (rear) low profile tyres. Standard for Luxury grade.

02. 19" FORGED ALLOYS

Inspired by those on the RC F GT3 race cars and forged by BBS in Japan, this ultra-lightweight alloy wheel has a sporty matt finish and is designed to accommodate large carbon-ceramic disc brakes. Standard for Track Edition grade.

03. 19" FORGED ALLOYS

This hand-polished wheel features Lexus 'L'-motif spokes that combine Takumi craftsmanship with advanced weight reduction technology. Standard for Carbon grade.



03



04

04. 19" FORGED ALLOYS

Not available in Northern Europe.

05. TRIPLE LED 'L' BEAMS / LED DRL

Jewel-like, triple 'L' LED headlights use the same light source for high and low beam, with the RC F's impressive aura enhanced by L-shaped full LED daytime running lights.

06. LED REAR LIGHTS

The rear light cluster combines elegant LEDs arranged in Lexus signature 'L' form. Thick-wall moulding technology gives a strikingly bold presence.

07. REAR DESIGN

Featuring twin tailpipes left and right, the rear bumper and diffuser have been optimised by sharpening the corners, with air ducts and fins for improved handling.



05



06



07

01. ANALOGUE CLOCK

This distinctive analogue clock was developed especially for the LC flagship coupé and features a three-dimensional frame and luminous hands.

02. SPORTS STEERING WHEEL

The RC F features an elliptical cross-section, thick grip steering wheel that offers greater control during performance driving. The placement, shape and operation of the wheel's paddle shifts have also been optimised for fast, accurate gear changes.

03. DRIVER-FOCUSED COCKPIT

The RC F's driver-focused cockpit will keep you perfectly relaxed and concentrated on the road or track ahead. Behind the beautifully crafted steering wheel, the sumptuous front seats offer 8-way electric adjustments.

04. LEATHER SPORTS SEATS

High-back leather seats are made using the 'integrated foaming' technique, which gives an incredibly supportive fit. This motorsport-inspired technology allows greater comfort and lateral support than is possible with conventional upholstery.

05. HEATED / VENTILATED SEATS

The driver and front passenger can heat or ventilate their leather seats. This adds to the sense of luxury, especially in extreme weather conditions.



01



02



03



04



05



01. CENTRAL INSTRUMENTS

The RC F's central meter represents a further development of the LFA's switchable dial. Information includes a large tachometer that alters according to driving mode. There are also digital and analogue speed readouts, a Torque Vectoring Differential monitor, a G-force meter, oil and water temperature gauges, fuel consumption information and even a stopwatch.



02. MARK LEVINSON®

The RC F's 17-speaker, 835 Watt Mark Levinson® Premium Surround system is tailored to the acoustic properties of the cabin. It delivers a peerless 7.1-channel digital home-theatre experience, enhanced by Clari-Fi™ that rebuilds sound lost in MP3 digital compression.

03. TOUCH PAD

Touch Pad with Remote Touch Interface lets front seat occupants interact intuitively with the central display. Ergonomically designed, it is as easy to use as a smartphone or tablet.

04. 10.3-INCH LEXUS PREMIUM NAVIGATION

The RC F comes equipped with Lexus Premium Navigation and a central 10.3-inch display controlled by an intuitive Touch Pad. As well as adjusting navigation, audio and climate using this display, compatible smartphones can be 'mirror linked', letting you view and control certain apps on your phone.



05. PARKING ASSIST MONITOR

Engage reverse and the view behind the car is relayed to the Lexus Media Display. On-screen guides are also displayed to assist parking.

06. LEXUS PREMIUM NAVIGATION

With vivid 3D graphics and many mapping options, the 10.3-inch screen is operated by Touch Pad or voice commands. The system will even generate a QR code for your smartphone, to help you reach your final destination on foot.

07. LEXUS LINK - CONNECTED SERVICES

Connecting to the Lexus Link app transforms your RC F into a connected car. Lexus Link gives you seamless access to connected services like:

- 📍 Driving Analytics: Tracks your journeys, driving style and business trips
- 📍 Find my Car: Locates your Lexus and guides you back to it
- 🚑 Accident Assistant: Depending on crash severity, informs chosen emergency contacts
- 🔧 Service and Maintenance: Helps you manage the care of your RC F
- 📍 Share to Car: Lets you plan a route on another device and send it to your Lexus, while 'Car to Door' guides you on foot to your final destination once you are parked



01. RIGID CHASSIS / WEIGHT REDUCTION

The foundation for the RC F's outstanding handling is its high-rigidity body. Numerous specialised manufacturing techniques further enhance strength, including body adhesives, laser-screw welding and multi-spot welding. On top of this, our engineers worked to reduce weight without compromising the RC F's sense of refinement and solidity. For instance at the rear, hollow half shafts are now used while up front a lighter intake manifold and a smaller air conditioning compressor remove weight too.

02. ADVANCED AERODYNAMICS

The RC F has superb aerodynamics thanks to details like a near-flat underbody, triple canards on the front spoiler, fins on the rocker panel for increased vehicle stability, vertical fins on the diffuser and an active rear wing.

03. DRIVE MODE SELECT

Vehicle performance can be fine-tuned using Drive Mode Select. ECO mode reduces emissions and conserves fuel while, for everyday driving, NORMAL provides an ideal balance of power, economy and ride comfort - and CUSTOM lets you adjust the RC F to suit your mood. For enhanced drivetrain responsiveness, simply switch to SPORT S or SPORT S+ mode.

04. SPORTS VDIM

Sports Vehicle Dynamics Integrated Management (VDIM) adjusts throttle, steering and suspension settings to provide sportier performance, and expands the permissible range of centrifugal force before the VDIM system intervenes. If you're ready to push the RC F to the extreme, you can switch Sports VDIM off completely.

05. FRONT SUSPENSION

Featuring forged aluminium components, the double wishbone front suspension is lightweight and responsive. Innovative suspension geometry delivers excellent handling stability and ride comfort.

06. REAR SUSPENSION

Straight-line and cornering stability is guaranteed by a multi-link rear suspension setup. A combination of high-tensile steel and die-cast/forged aluminium components keeps weight low but ensures vibration-free precision. To further refine the feel of the RC F, there are now stiffer bushings for the rear suspension arms and steering rack mounts.

07. ADAPTIVE VARIABLE SUSPENSION

For an even more dynamic drive, the latest Adaptive Variable Suspension intelligently controls the damping force on all four wheels. This not only improves ride comfort, but also increases handling stability - especially during higher-speed cornering.

08. CARBON CERAMIC BRAKES

Using technology first developed for the LFA supercar, the Track Edition benefits from carbon-ceramic disc brakes, which are 22 kg lighter than those on the standard RC F.





01. LEXUS SAFETY SYSTEM +

The RC F sports coupé can be ordered with our breakthrough Lexus Safety System + that combines Pre-Collision System, Dynamic Radar Cruise Control, Lane Departure Alert, Road Sign Assist and Automatic High Beam in one powerful package.

02. PRE-COLLISION SYSTEM / PEDESTRIAN DETECTION

Millimetre-wave radar and an on-board computer calculate collision risk ahead. If the risk is high, the driver is alerted by audible and visual warnings and brake pressure is increased. When a collision is deemed unavoidable, the brakes will be applied automatically as necessary and the front seatbelts tightened. As part of the Pre-Collision System, if an object (such as a pedestrian during daylight hours) is detected in front of the RC F, automatic braking will activate when the car is travelling between about 10 and 80 km/h to help avoid a collision.

03. LANE DEPARTURE ALERT / AUTOMATIC HIGH BEAM

A front facing camera mounted behind the rear-view mirror enables Lane Departure Alert (LDA) to warn you if you inadvertently drift out of lane. In addition, should LDA judge you are deviating from course, it will also apply steering force to help keep you in lane. At night, Automatic High Beam uses the same camera to automatically switch to low beam when it detects the lights of either an oncoming or preceding vehicle. This reduces the chance of accidentally dazzling other drivers should you forget to switch off the high beam headlights.

04. DYNAMIC RADAR CRUISE CONTROL

For a more relaxing drive, Dynamic Radar Cruise Control maintains a set distance between the RC F and the vehicle ahead, even if that vehicle varies its speed.

05. ROAD SIGN ASSIST

The Road Sign Assist (RSA) system on the RC F recognises traffic signs using the windscreen-mounted camera, and provides information to the driver in the multi-information display. RSA can detect signs that are compliant with the Vienna Convention (including electroluminescent and flashing signs).

Under no circumstances should Lexus Safety System + be used to replace your driving skills at the wheel. Please read the instructions very carefully before operating the system and remember the driver is always responsible for safety. Details of specifications and equipment are subject to change to suit local conditions and requirements. Please enquire at your local Lexus Authorised Retailer.



01. EIGHT AIRBAGS

RC F occupant safety is provided by eight airbags. The driver and front passenger are protected by 2-stage head airbags, as well as knee and side airbags. Curtain shield airbags run the full length of both cabin sides. All seatbelts are also specified with pre-tensioners.

02. BLIND SPOT MONITOR

Radar devices mounted in the rear bumper detect vehicles in adjacent lanes that are not visible in the door mirrors. If the driver is indicating to change lane and a vehicle enters the blind spot, Blind Spot Monitor instantly activates a warning signal in the relevant door mirror.

03. REAR CROSS TRAFFIC ALERT

When reversing, for instance in a busy car park, Rear Cross Traffic Alert (RCTA) uses Blind Spot Monitor radar to identify cars approaching the difficult-to-see area behind the RC F. When a vehicle is detected, the RCTA function alerts you with a visual display in the door mirrors and a buzzer.





01. RUBBER FLOOR MATS

The ultimate solution for your car's carpets, protecting them from muddy or wet shoes and the ingress of dirt, sand or dust. The driver's mat has dual safety fixings to hold it firmly in place.

02. TEXTILE FLOOR MATS

Luxurious yet protective black or red textile floor mats. Made of sound-absorbing acuvellour, they are shaped for a perfect fit. The driver's mat has dual safety fixings to prevent it slipping.

03. VERTICAL CARGO NET

Enjoy added practicality and a tidy boot. The net clips on to factory-fitted hooks on the side of the luggage compartment and has two pockets for storing smaller items, while keeping them easily accessible.

04. HORIZONTAL CARGO NET

A convenient solution to the distraction of luggage sliding around in the boot. The net attaches to factory-fitted hooks in the boot space and is ideal for securing a bag or briefcase.

05. ILLUMINATED SCUFF PLATES

Genuine Lexus scuff plates for the door sills create an immediate impression of style while also serving a very practical purpose of protecting the sill paintwork from dirty marks and scratches.



01



02



02



03



04



05

DEVELOPING A NEW LEXUS PAINT COLOUR IS BOTH COMPLEX AND TIME CONSUMING



Lexus designers never use off-the-shelf colours, preferring instead to develop their own, from scratch, a process that can take up to two years. The Lexus paint palette totals some 30 different colours including metallic finishes like Radiant Red and Graphite Black.

There are no shortcuts to creating a new Lexus colour: a designer's decision comes only after going through hundreds of samples. "When developing a new colour I see so many shades of paint that I sometimes can't see straight at the end of the day," says Megumi Suzuki, one of our most experienced colour designers. To do her job, it takes a grasp of chromogenics and a keen eye.

"Every time I meet someone or walk into a shop or go to someone's house, I check out colours and materials," she says. "There are a lot of people like me in our division."

Even after a colour has been decided upon, there's plenty to do. At various stages during development, Suzuki had to enlist a small army of experts: lab technicians who mix the paint, clay sculptors, engineers and the assembly-line paint shop crew who would give each car a flawless, uniform coat. Every few weeks Kansai Paint (a Lexus paint supplier) produces a new batch, and Lexus designers give the samples a thorough look-over, bending the test panels to mimic the contours of a car. All are scrutinised indoors and outdoors, under floodlights, in sunlight, shade and overcast conditions, and at different times of the day and months of the year.

Selecting the final colour is not easy. A colour that is dazzling on a summer morning can appear sickly in the shade or under showroom lights. Designers also have to contend with the vagaries of their own preferences. "The odd thing about colour is that your perception of it can change depending on the season, how you feel that day and the trends you're seeing," says Suzuki.

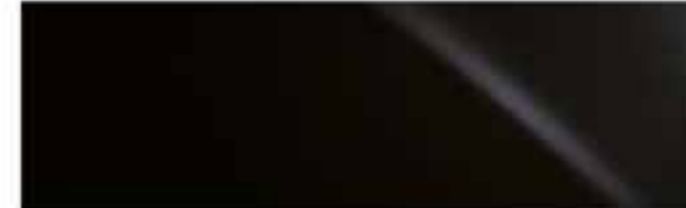
F WHITE | 083



SONIC GREY | 1L1



GRAPHITE BLACK | 223



RADIANT RED | 3T5¹



FLARE YELLOW | 5C1²



SAPPHIRE BLUE | 8X1¹



¹ Not available on Track Edition grade.

² Exclusive to Carbon grade.

Please note: due to printing variances, actual paintwork colours may vary slightly from those illustrated.

ALCANTARA®¹



Flare Red

SEMI-ANILINE LEATHER²



Black



F White Accent



Flare Red Accent

INLAYS³



Glass Fibre, Silver



Carbon



Red Carbon

¹ Alcantara is only available on Track Edition grade.

² Semi-aniline leather is standard on Luxury and Carbon grades.

³ Carbon inlay is standard on Carbon grade. The Glass Fibre and Silver inlays are standard on Luxury grade. Red Carbon is standard on Track Edition grade.

The images on the following page illustrate a selection of the interior combinations available. Your local Lexus Authorised Retailer will be pleased to provide you with any further help



01



02



03



04

01 Flare Red Alcantara with Red Carbon inlays (Track Edition)

02 Black semi-aniline leather with Carbon inlays

03 F White Accent semi-aniline leather with Carbon inlays

04 Flare Red Accent semi-aniline leather with Carbon inlays

EXTERIOR	LUXURY	CARBON	TRACK EDITION
19" carbon ceramic brakes front and rear, red brake callipers with F logo	–	–	■
19" discs brakes front, 18" disc brakes rear, orange brake callipers with F logo	■	■	–
Auto-levelling headlights, dynamic	■	■	■
Black window frame moulding	■	■	■
Body-coloured front spoiler	■	–	–
Body-coloured rear diffuser	■	–	–
Body-coloured, retractable rear spoiler	■	–	–
Carbon-fibre front spoiler	–	■	■
Carbon-fibre rear diffuser	–	■	■
Carbon-fibre roof and bonnet	–	■	■
Carbon-fibre, fixed rear wing	–	–	■
Carbon-fibre, retractable rear spoiler	–	■	–
Daytime running lights (DRL), LED	■	■	■
Door mirrors, electrically adjustable with memory, heated	■	■	■
Door mirrors, electro chromatic (auto-dimming), auto-folding	■	■	■
Dusk sensor	■	■	■
Front turn signal indicators, LED	■	■	■
Headlight cleaners	■	■	■
Headlights, triple LED	■	■	■
Parking assist sensors, front and rear	■	■	■
Rain sensing windscreen wipers	■	■	■
Rear bumper with quad exhaust	■	■	■
Rear combination lights, LED	■	■	■
Rear fog lights, LED	■	■	■
Titanium exhaust	–	–	■
Ultra Violet (UV) and heat insulating tinted glass	■	■	■
Water-repellent glass, front door windows	■	■	■

WHEELS

19" lightweight forged alloy wheels, 10-spoke, 255/35 (fr) 275/35 (rr) R19 tyres	–	–	■
19" forged alloy wheels, 7-twin-spoke design, 255/35 (fr) 275/35 (rr) R19 tyres	■	–	–
19" forged alloy wheels, 10-spoke polished, 255/35 (fr) 275/35 (rr) R19 tyres	–	■	–

ACTIVE SAFETY AND DRIVING DYNAMICS

Active brake lights	■	■	■
Adaptive Variable Suspension (AVS)	■	■	■
Anti-lock Braking System (ABS)	■	■	■
Automatic High Beam (AHB)	■	■	■
Blind Spot Monitor (BSM) with Rear Cross Traffic Alert (RCTA)	■	■	■
Cruise Control	■	■	■
Drive Mode Select (ECO/ NORMAL / CUSTOM / SPORT S / SPORT S+)	■	■	■
Dynamic Radar Cruise Control (DRCC), high-speed	■	■	■
Electric Power Steering (EPS)	■	■	■
Electronic Brake-force Distribution (EBD)	■	■	■
Front pedestrian detection, daytime only	■	■	■
Hill-start Assist Control (HAC)	■	■	■
Lane Departure Alert (LDA)	■	■	■
Launch Control	■	■	■

■ Available as standard.
○ Available as an option.
□ Available as part of a pack.
– Not available.

ACTIVE SAFETY AND DRIVING DYNAMICS	LUXURY	CARBON	TRACK EDITION
Pre-Collision System (PCS)	■	■	■
Road Sign Assist (RSA)	■	■	■
Torque Vectoring Differential (TVD)	–	■	–
Torsen® Limited Slip Differential (LSD)	■	–	■
Traction Control (TRC)	■	■	■
TVD Mode Select, STANDARD / SLALOM / TRACK	–	■	–
Tyre Pressure Warning System (TPWS) with auto-location	■	■	■
Vehicle Dynamics Integrated Management (VDIM)	■	■	■
Vehicle Stability Control (VSC)	■	■	■

PASSIVE SAFETY

Airbag cut-off switch, front passenger	■	■	■
Airbags, driver and front passenger; head, side and knee / full-length curtain shield / rear side	■	■	■
Audible and visual front seatbelts reminder, front and rear seats	■	■	■
ISOFIX attachment, rear seats	■	■	■
Seatbelt pre-tensioners, front and rear seats	■	■	■

SECURITY

Anti-theft system - siren / intrusion sensor / inclination sensor / glass breakage sensor	■	■	■
Auto door locking	■	■	■
Double door lock	■	■	■
Wireless door lock	■	■	■

AUDIO, COMMUNICATION & INFORMATION

10.3" multimedia display	■	■	■
17-speaker Mark Levinson® Premium Surround Sound system	■	■	■
2 USB ports, front centre console	■	■	■
4.2" colour multi-information display	■	■	■
Active Sound Control (ASC)	■	■	–
Analogue clock with GPS function	■	■	■
AUX socket, front centre console	■	■	■
Bluetooth® mobile phone and audio connectivity	■	■	■
In-dash, single slot CD/DVD player	■	■	■
Lexus Link Connected Services	■	■	■
Lexus Premium Navigation	■	■	■
Optitron instrumentation	■	■	■
Parking assist monitor with on-screen guides	■	■	■
Smartphone integration (Apple® CarPlay, Android Auto®)	■	■	■
Steering wheel mounted controls, audio / display / phone / voice / DRCC / LDA	■	■	■
Touch Pad operation for multimedia display	■	■	■

EQUIPMENT | GRADES

INTERIOR COMFORT & CONVENIENCE	LUXURY	CARBON	TRACK EDITION
3-spoke, perforated leather trimmed steering wheel	■	■	■
8-way electrically adjustable front seats	■	■	■
Black roof lining	■	■	■
Boot lid, electrically operated	■	■	■
Door panel finish, Alcantara®	■	■	■
Electronic climate control, 2-zone with auto-recirculation	■	■	■
F exclusive front seats	■	■	■
Fixed rear seats	■	■	■
Glass sunroof, electric tilt/slide	○	-	-
Glove box inlay, Carbon	-	■	-
Glove box inlay, Glass-fibre, Silver	■	-	-
Glove box inlay, Red Carbon	-	-	■
Heated front seats	■	■	-
Illuminated entry system	■	■	■
Integrated headrests, front and rear	■	■	■
Machined aluminium sports pedals and footrest on driver's side	■	■	■
Memory for driver seat, steering wheel position and door mirrors	■	■	■
Paddle-shift controls	■	■	■
Perforated leather trimmed gearshift knob	■	■	■
Rear-view mirror, electro chromatic (auto-dimming)	■	■	■
Smart entry and start system	■	■	■
Smart key	■	■	■
Stainless steel scuff plates with LEXUS inscription	■	■	■
Steering wheel heater	■	■	-
Tyre repair kit	■	■	■
Upholstery, Alcantara®	-	-	■
Upholstery, semi-aniline leather	■	■	-
Ventilated front seats	■	■	-

- Available as standard.
- Available as an option.
- Available as part of a pack.
- Not available.

EQUIPMENT | PACKS

PACKS	LUXURY	CARBON	TRACK EDITION
Lexus Safety System +			
Automatic High Beam (AHB)	■	■	■
Dynamic Radar Cruise Control (DRCC), high-speed	■	■	■
Front pedestrian detection, daytime only	■	■	■
Lane Departure Alert (LDA)	■	■	■
Pre-Collision System (PCS)	■	■	■
Rain sensing windscreen wipers	■	■	■
Road Sign Assist (RSA)	■	■	■
Steering wheel mounted controls, audio / display / phone / voice / DRCC / LDA	■	■	■

TECHNICAL DATA

ENGINE	RC F
Capacity (cm ³)	4969
Cylinders / Valves	V8 / 32
Maximum power (DIN hp @ rpm)	464 @ 7100
Maximum power (kW @ rpm)	341 @ 7100
Maximum torque (Nm @ rpm)	520 @ 4800
TRANSMISSION	
Type	8-speed Sport Direct Shift Automatic
Drive	Rear-Wheel Drive
TOTAL SYSTEM OUTPUT	
Total power (DIN hp)	464
Total power (kW)	341
PERFORMANCE	
Maximum speed (km/h)	270
Acceleration 0-100 km/h (s)*	4.3 / 4.5
FUEL CONSUMPTION** (l/100km)	
Combined	11.8
CO ₂ EMISSIONS** (g/km)	
Combined	268
EMISSION STANDARD	
Euro Class	Euro 6d-ISC-FCM
WEIGHTS (kg)	
Gross vehicle	2250
Kerb weight (min. - max.)	1715 - 1825
CAPACITIES***	
Luggage volume (l)	366
Fuel tank capacity (l)	66

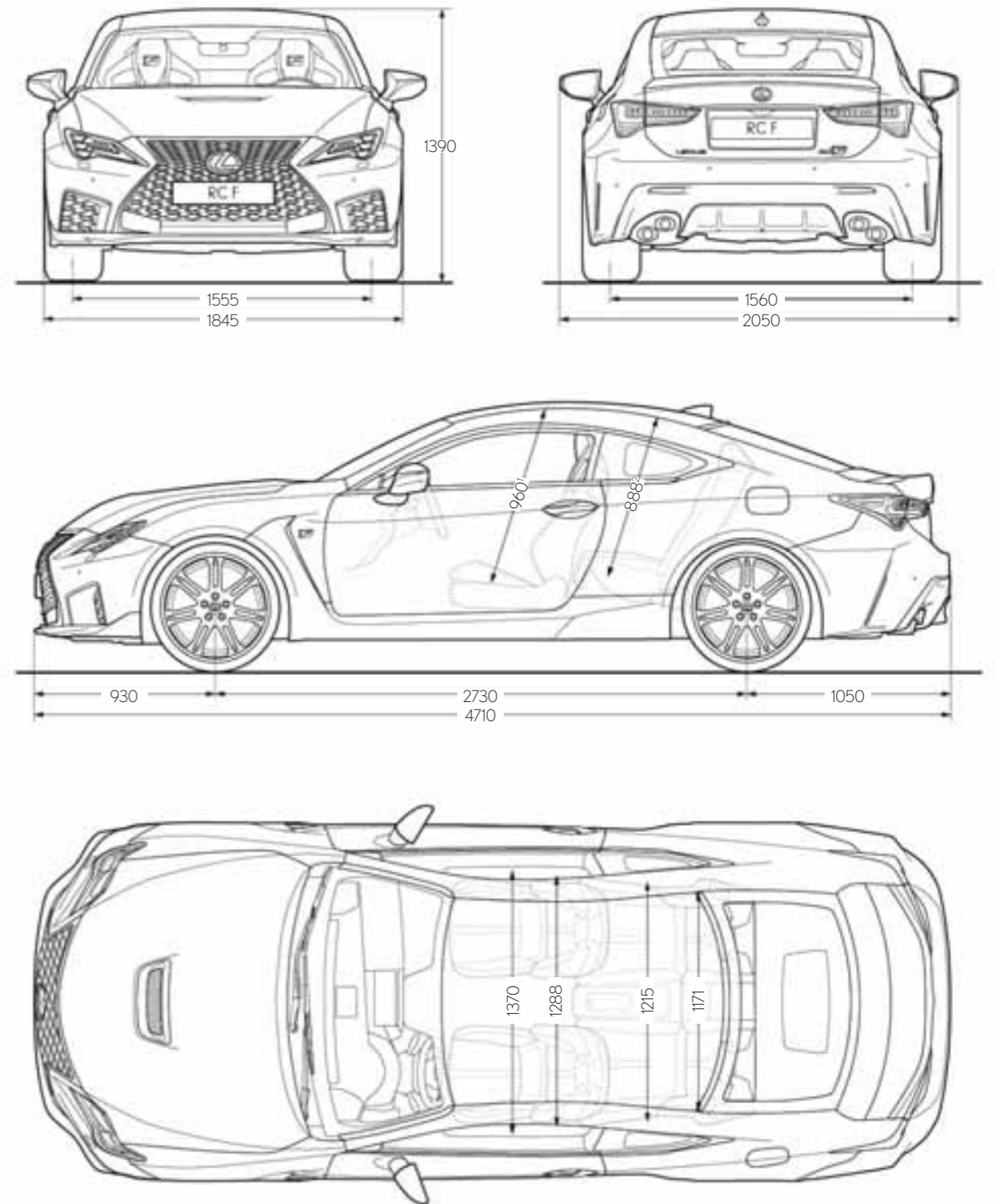
* Acceleration 0-100 km/h differs by the grade. The 1st figure is applicable for the Track Edition, the 2nd figure is for other grades.

**The fuel consumption and CO₂ values are measured in a controlled environment on a representative production model, in accordance with the requirements of the new WLTP European Regulation EC 2017/1151 and its applicable amendments. For each individual vehicle configuration, the final fuel consumption and CO₂ values may be calculated based on the ordered optional equipment. The fuel consumption and CO₂ values of your vehicle may vary from those measured or calculated values, as driving behaviour as well as other factors (such as road conditions, traffic, vehicle condition, tyre pressure, load, number of passengers, etc.) have an influence on a car's fuel consumption and CO₂ emissions. For more information regarding the new WLTP test method, please visit: www.lexus.eu/wltp#nedc

*** Luggage volume is calculated as per the VDA method. The figure quoted includes the maximum under floor storage area in the luggage compartment. The available underfloor storage area may differ if car is equipped with Torque Vectoring Differential (TVD).

Please note: further Technical Data, including any updates, can be found at www.lexus.lv / www.lexus.it / www.lexus.ee / www.lexus.sw / www.lexus.fi / www.lexus.no / www.lexus.dk

TECHNICAL DATA



¹ Figure quoted is for RC F models equipped with standard roof. For models with optional sunroof, the figure is 928.

² Figure quoted is for RC F models equipped with standard roof. For models with optional sunroof, the figure is 878.

Please note: the dimensions illustrated / noted are measured in millimetres.

More about the new RC F:

lexus.lv/RC F

lexus.lt/RC F

lexus.ee/RC F

lexus.sw/RC F

lexus.fi/RC F

lexus.no/RC F

lexus.dk/RC F

youtube.com/LexusEurope

twitter.com/Lexus_EU

© 2020 Lexus Europe* reserves the right to alter any details of specifications and equipment without notice. Details of specifications and equipment are also subject to change to suit local conditions and requirements. Please enquire at your local Lexus Authorised Retailer of any such changes that might be required for your area.

Note: vehicles pictured and specifications detailed in this brochure may vary from models and equipment available in your area. Vehicle body colour might differ slightly from the printed photos in this brochure.

For further information please visit our website: www.lexus.eu

Taking care of the environment is a priority for Lexus. We take many measures to ensure that during the lifecycles of our vehicles - from design, production, distribution, sales and service to end-of-life - their environmental impact is minimised. Your retailer will be happy to provide more information on end-of-life vehicle requirements.

* Lexus Europe is a division of Toyota Motor Europe NV/SA.

Printed in Europe, September 2020

